

Wales digital 2030 framework

Insights summary for Further Education (FE) and Work-based Learning (WBL)

Digital 2030 vision

Post-16 learning providers will seamlessly integrate digital technology into delivery; and encourage innovation in using inclusive, accessible and bilingual approaches to enhance the learner's experience. Based on an awareness of the digital skills needed to support the Welsh economy, providers will equip learners and staff with the digital capabilities and confidence they will need to succeed in everyday life and in work.



Aim 1: Digital standards

Clear, nationally agreed standards for digital skills are in place to enable learners and staff to meet industry, private and public sector requirements, building on the digital competences developed during compulsory schooling.



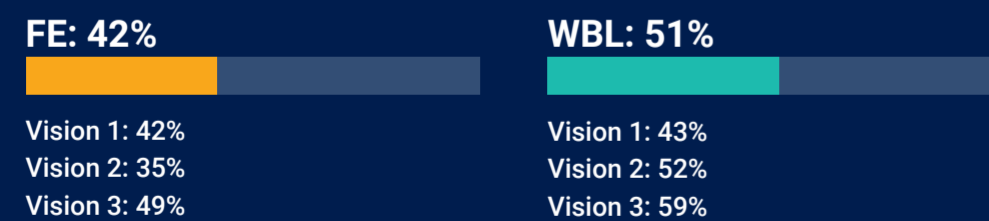
Aim 2: Enhanced learning

Learning is enhanced through the use of technology, wherever it is appropriate and beneficial to the learner.



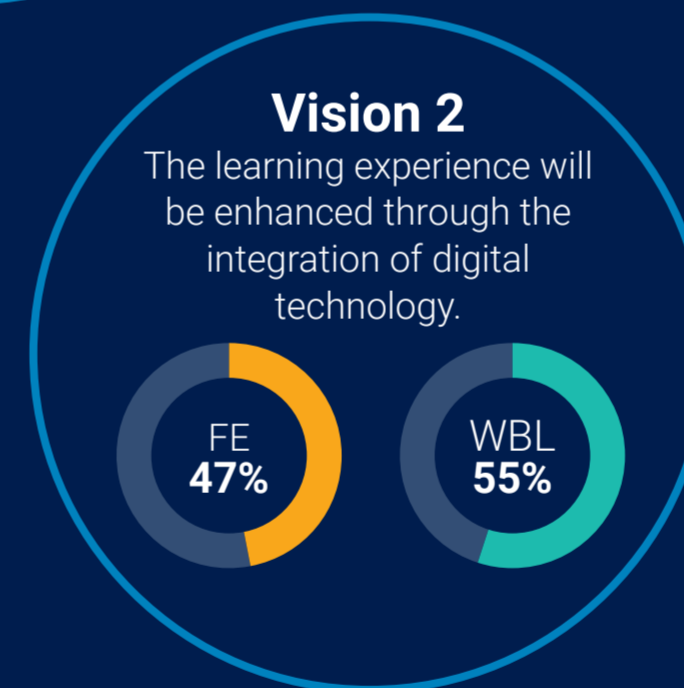
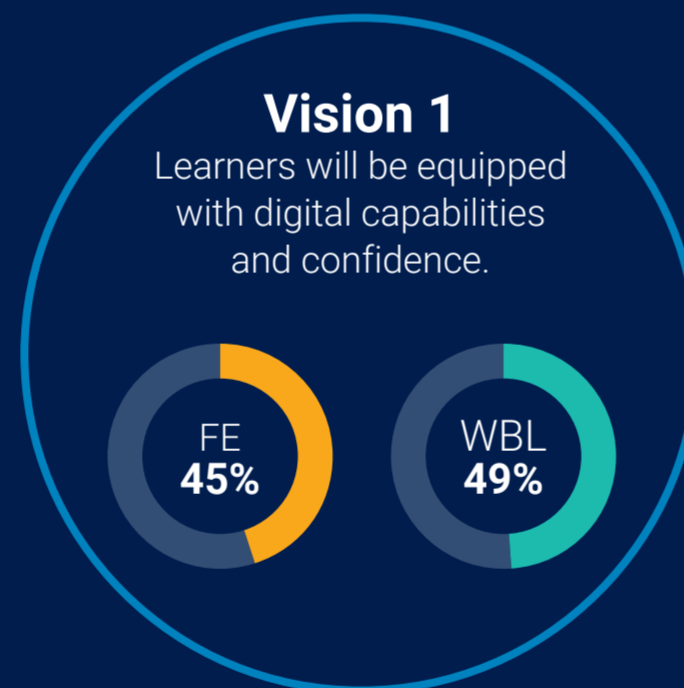
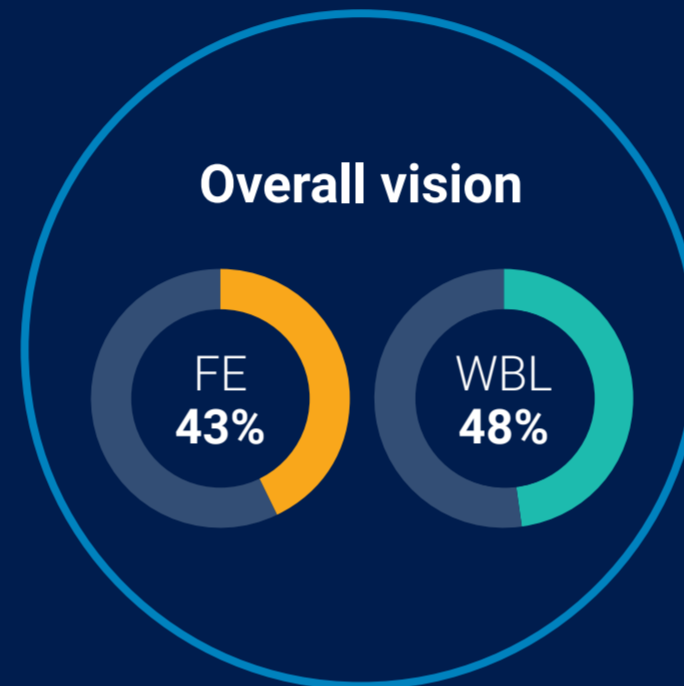
Aim 3: Coherence and accessibility

The coherence and accessibility of digital learning is increased through a range of curriculum delivery methods that are appropriate to learner and employer needs, and offer learning opportunities in both the Welsh and English languages.



Aim 4: Safe experience

A safe and secure teaching and learning experience is enabled and managed for all learners and staff through provision of appropriate virtual and physical environments.



Aim 5: Understanding benefits

The benefits of digital technology, and possible barriers to their achievement, are understood by all staff including senior leaders.



Aim 6: Continual improvement

Continual improvement of the learner experience and business processes is supported through effective and innovative use of digital technology.



Aim 7: Collaborative culture

A culture of collaboration ensures that information and best practice are shared to drive effective use of digital skills to support leadership, learning and business processes.



Aim 8: Resource alignment

Staff, learning and business resources are aligned to enable efficient support of the continually evolving digital requirements of post-16 education.

